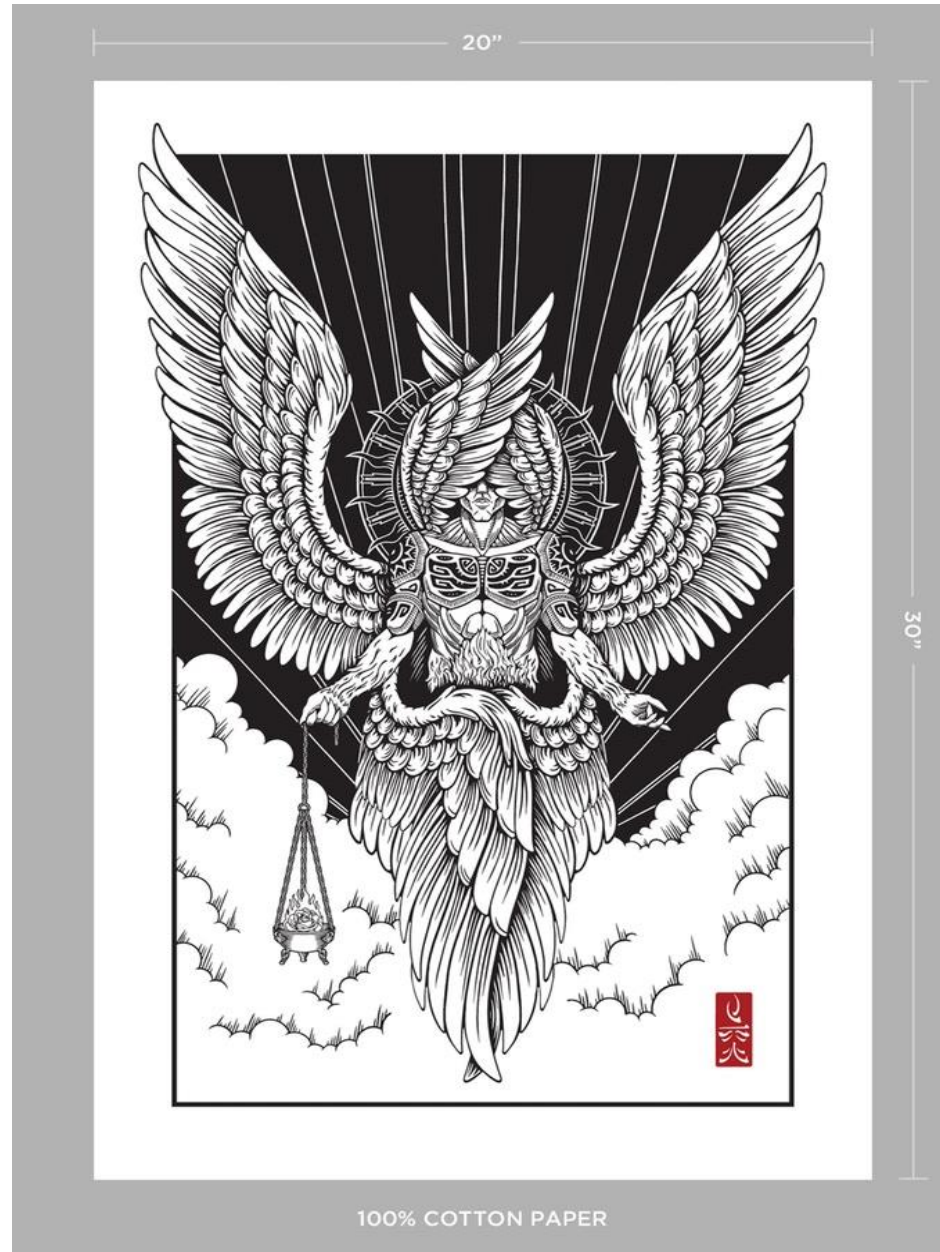


THE KNOWLEDGE & CONVERSATION OF THE HOLY GUARDIAN ANGEL AS A PROCESS OF ALCHEMICAL INDIVIDUALIZATION

Denny Sargent



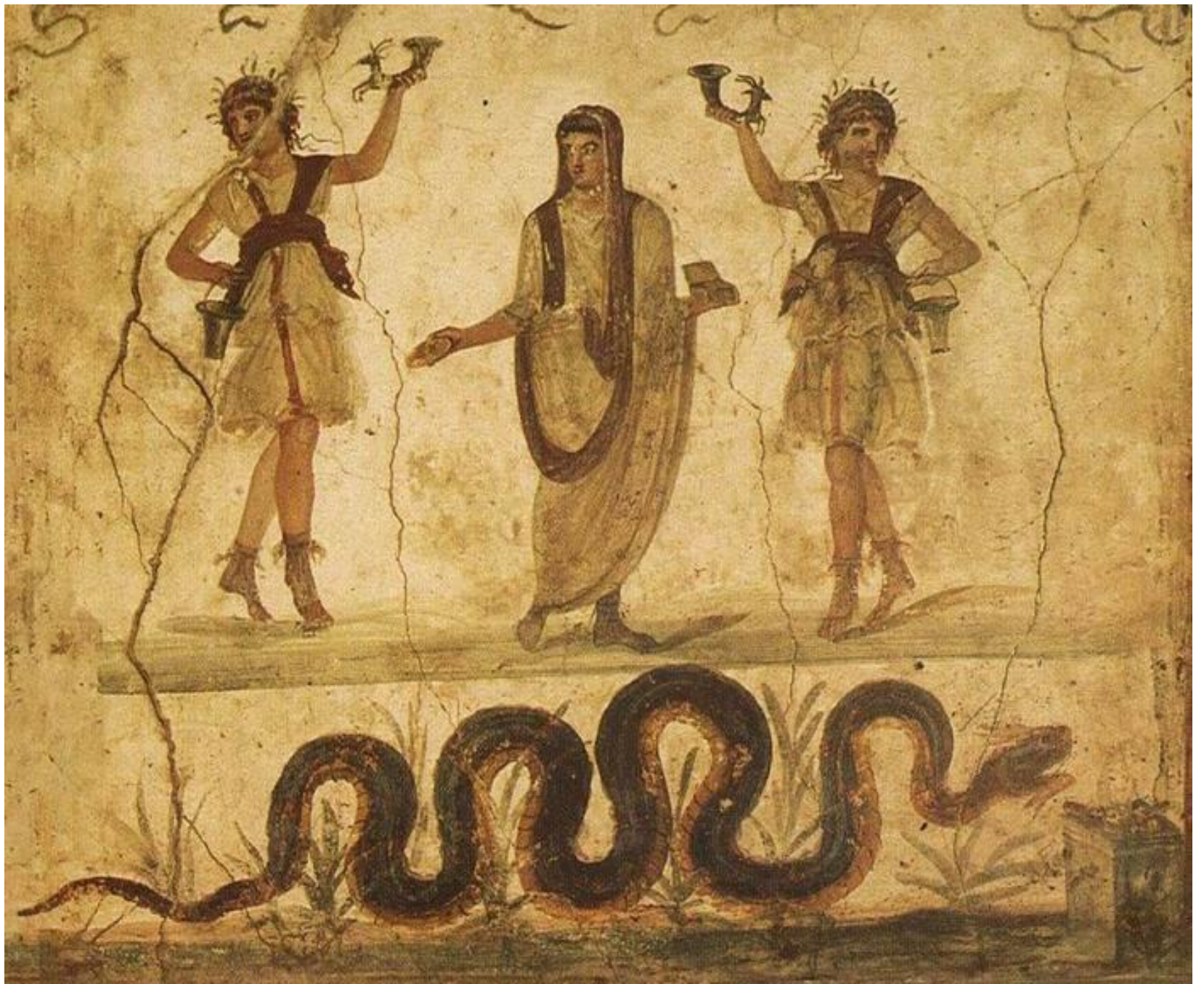
What is an angel?



100% COTTON PAPER

The 'Guardian Spirit' throughout history































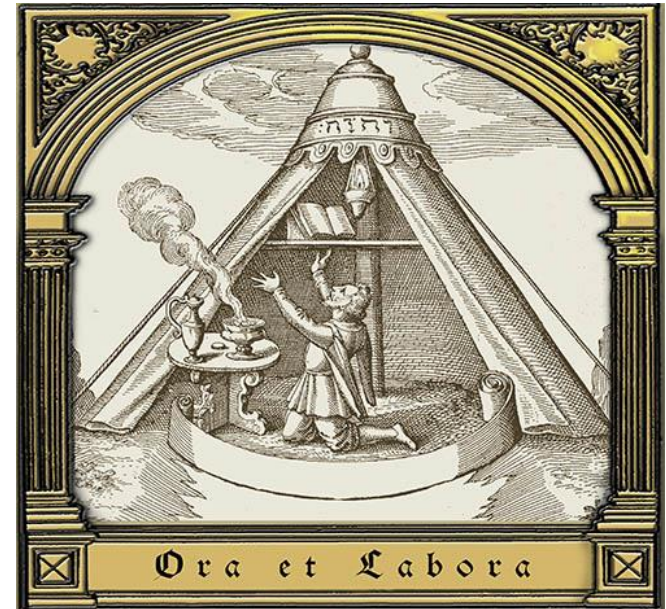
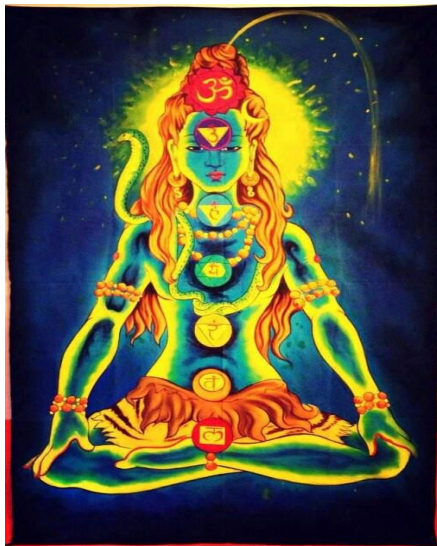




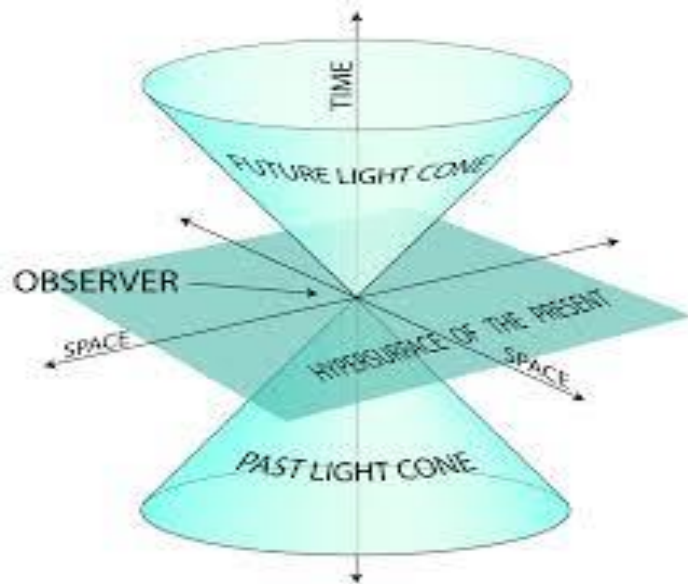
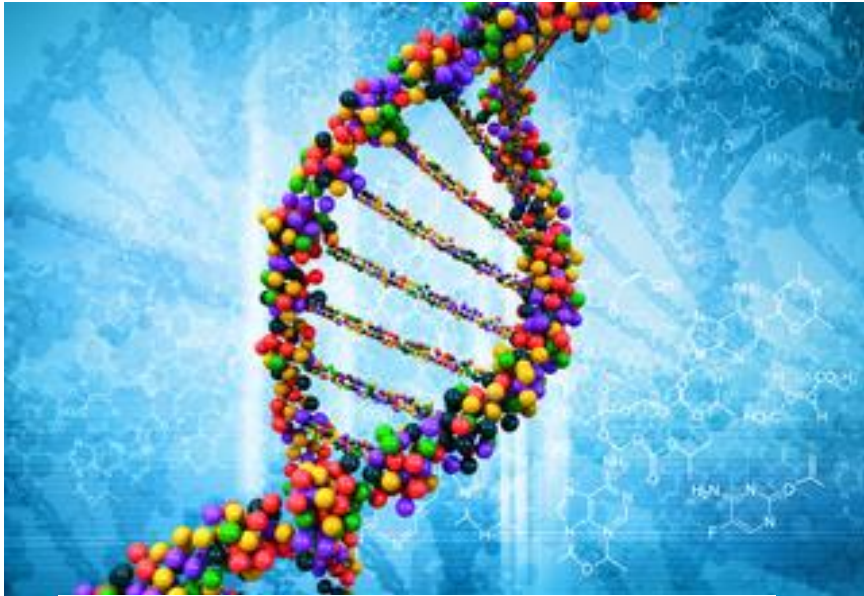
What is Knowledge & Conversation of the HGA?



Mystical/Magickal



Biology/Physics/Cosmology



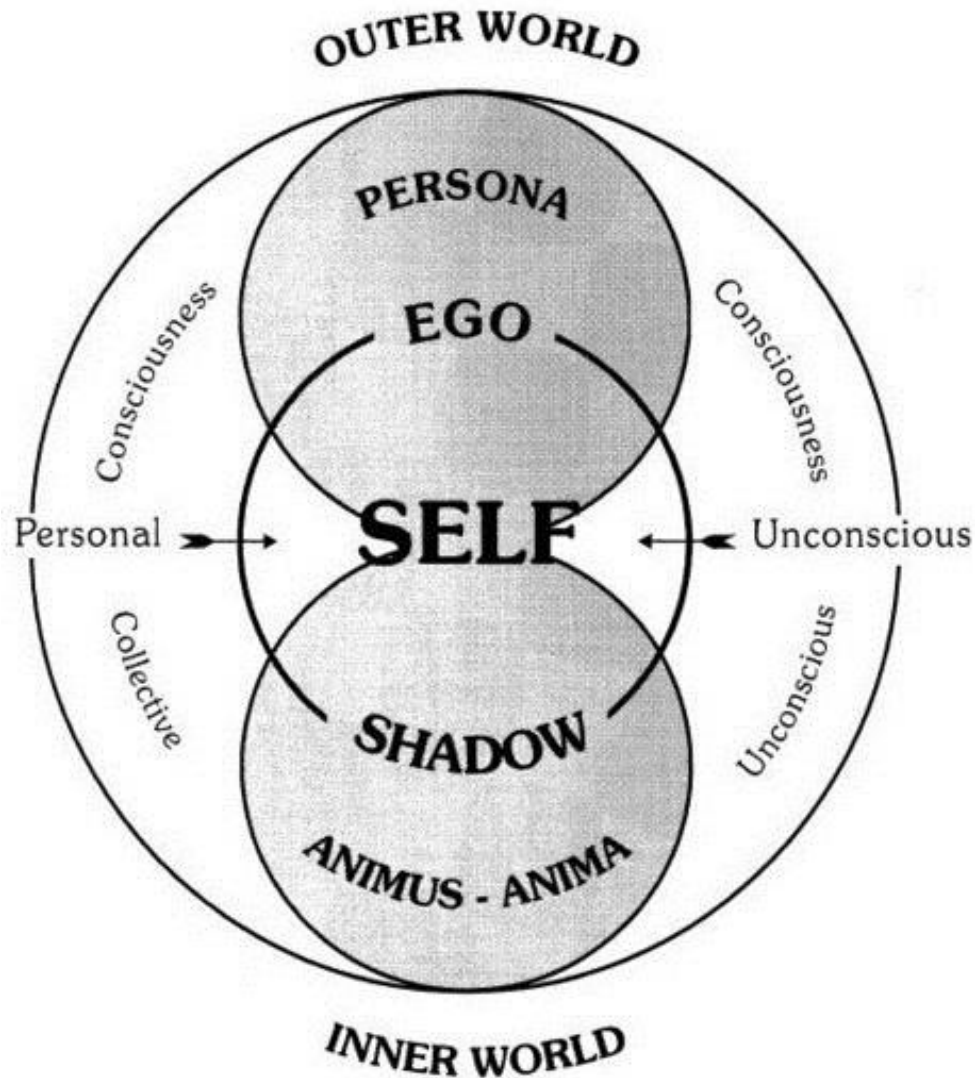
The 4D Universe

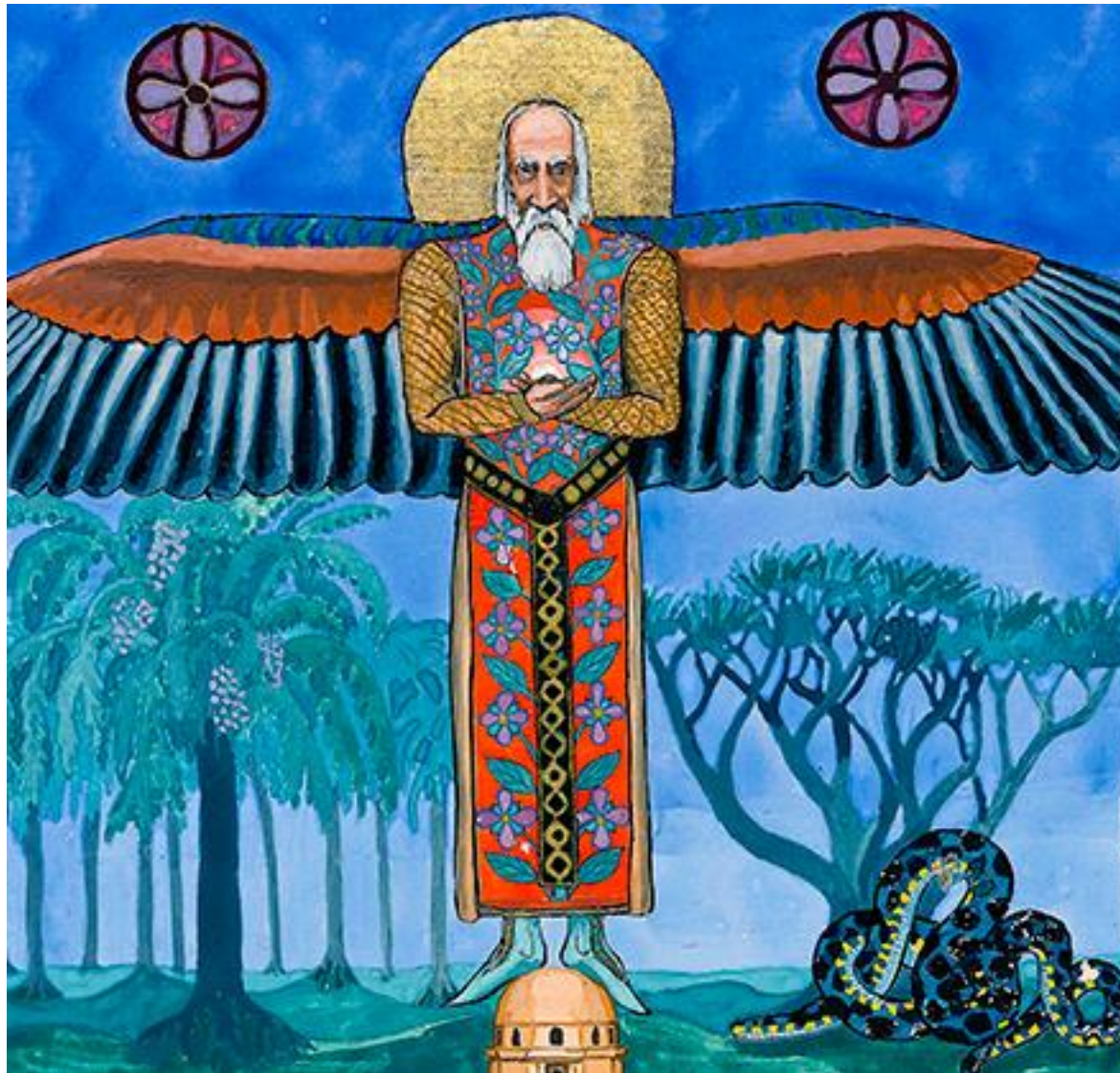
- Many cosmologists believe that our Universe is a 4D hypersphere
- This is a 3D movie projection of a 4D hypersurface

movie

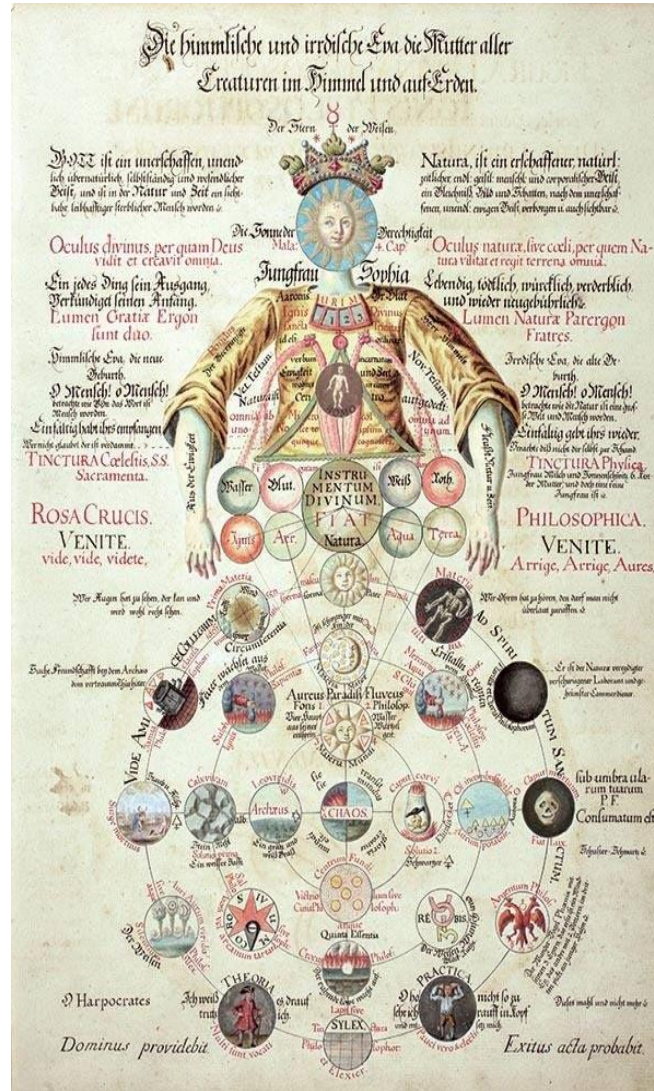
May 8, 2001 Lynn Collinsky - Cosmology A360 21

Psychology (Jungian)





Chakras, Alchemical Steps and Archetypes



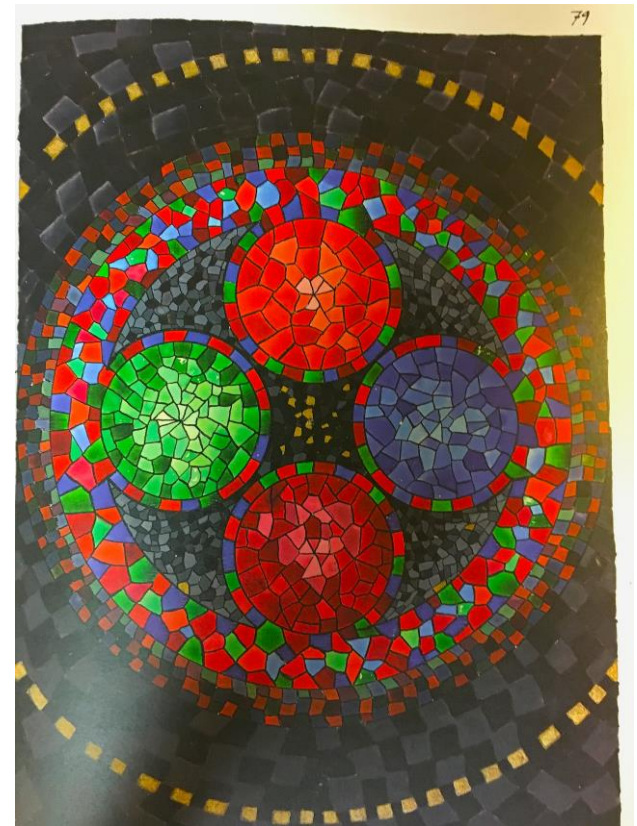
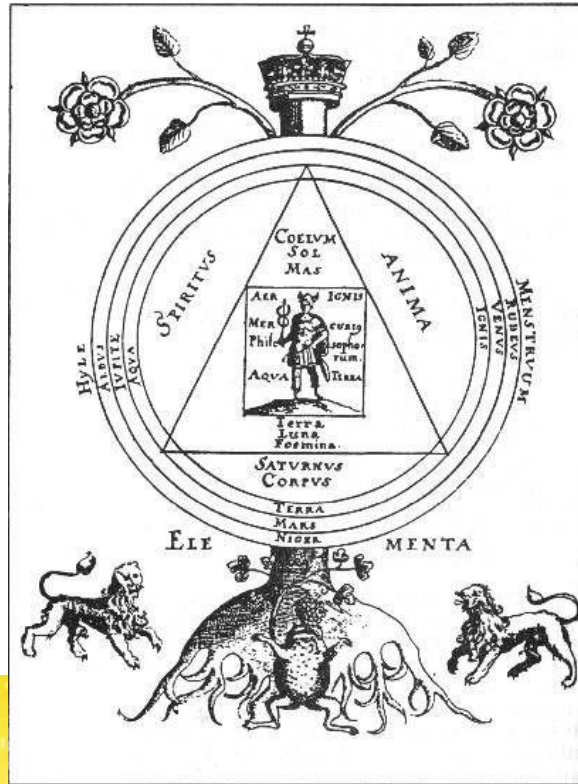
Calcination



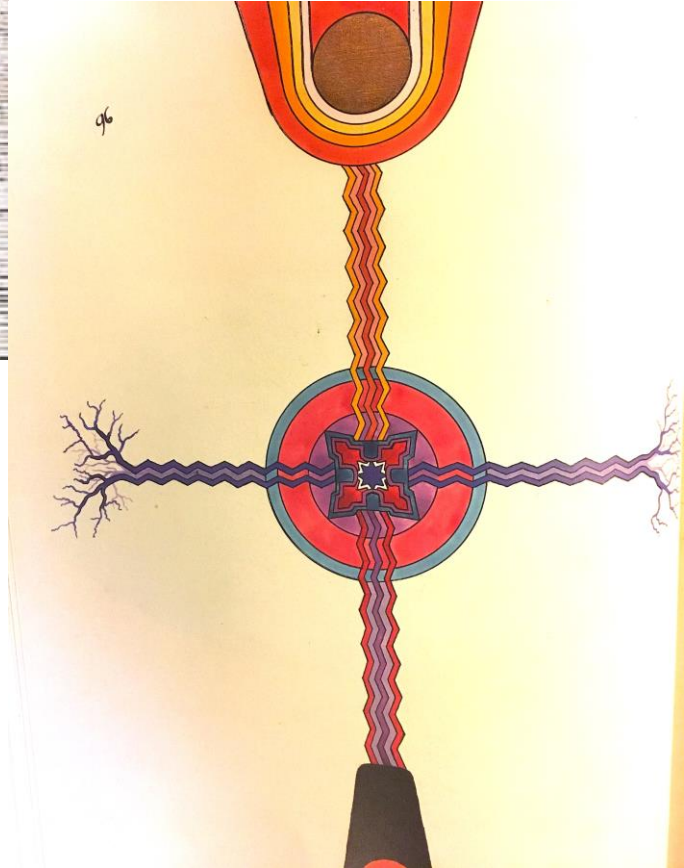
Dissolution



Separation



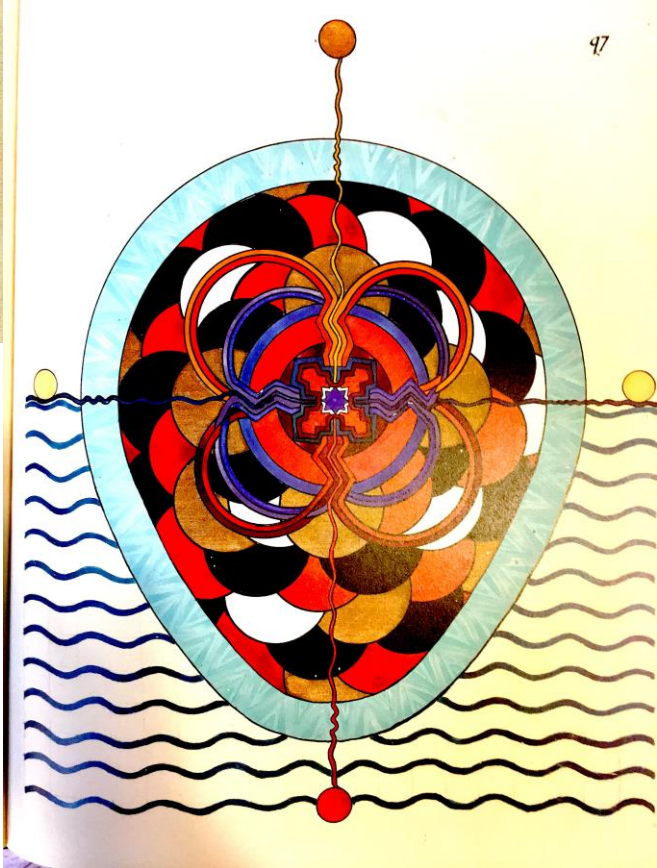
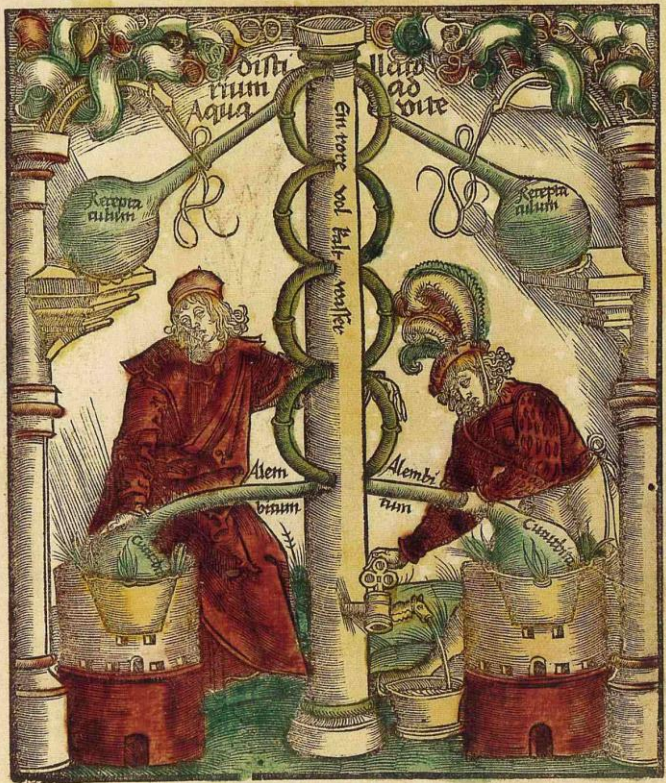
Conjunction



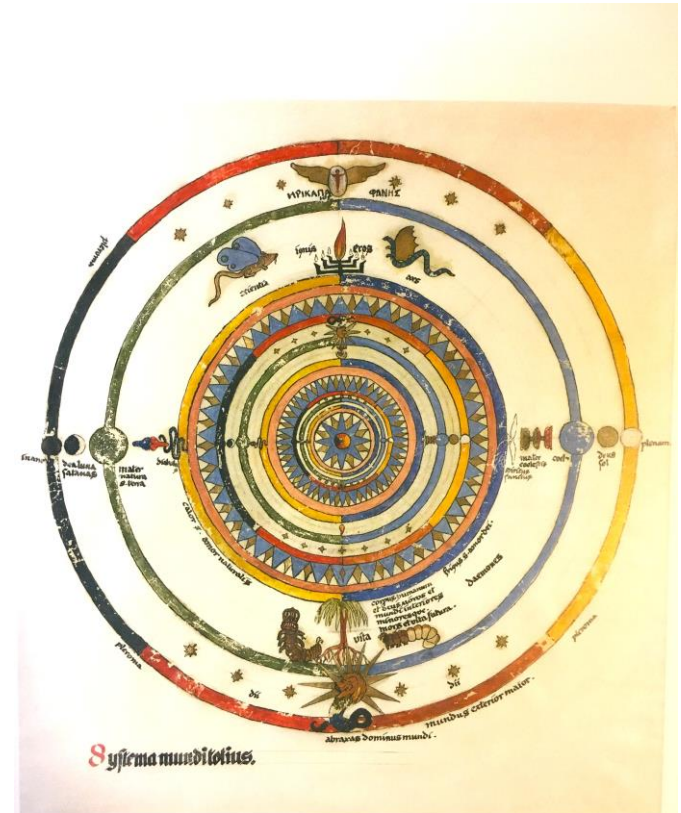
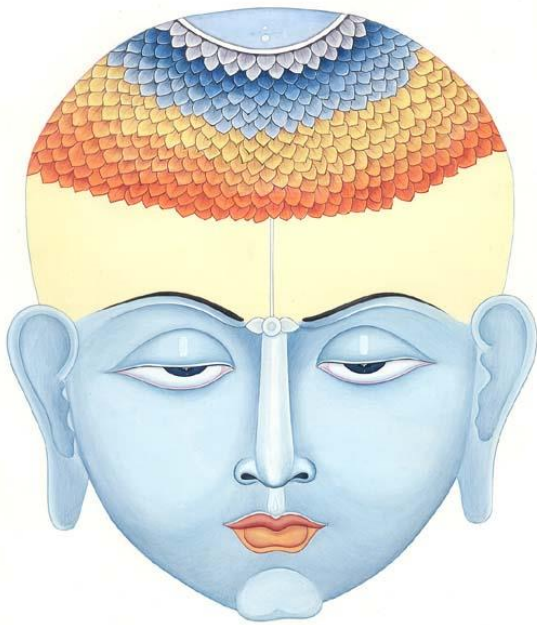
Fermentation



Distillation



Coagulation



Systema Mandalaicum. (30 CM x 34 CM) In 1935, Jung's Systema Mandalaicum was published anonymously in a special issue of the dedicated to the Frazer conferences. In a letter of February 11, 1935, to Walter Cooze, Jung explicitly stated that he did not want his name to appear with it (14). He added the following comments to it: "It portrays the anatomy of the macrocosm within the macrocosmic world and its anatomies. At the very top, the figure of the

number of natural man (the twice-five rays of his star). The accompanying animals of the natural world are a devilish monster and a larva. This signifies death and rebirth. A further division of the mandala is horizontal. To the left we see a circle indicating the body or the blood, and from it runs the serpent, which winds itself around the phallus, as the generative principle. The serpent is dark and light, signifying the dark realm of the earth, the moon, and the void (therefore

Magnum Opus: *Solve et coagula*

